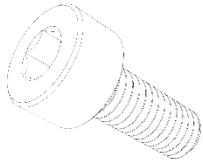


ORBITER CLOCKWORK ASSEMBLY MANUAL

MANUAL VERSION 1.0



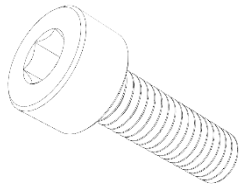
HARDWARE



SOCKET HEAD CAP SCREW (SHCS)

Metric fastener with a cylindrical head and hex drive.

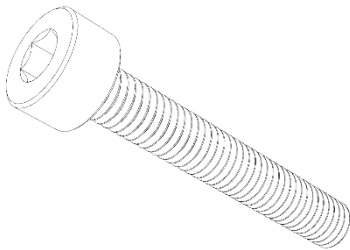
M3x8 Quantity 1



SOCKET HEAD CAP SCREW (SHCS)

Metric fastener with a cylindrical head and hex drive.

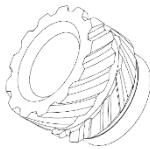
M3x16 Quantity 1



SOCKET HEAD CAP SCREW (SHCS)

Metric fastener with a cylindrical head and hex drive.

M3x20 Quantity 2



TAPERED HEAT-SET INSERTS FOR PLASTIC

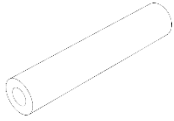
The tapered shape makes it easier to guide these inserts into a hole during installation. Use a drill bit to create a straight hole, then taper the top half. Heat inserts with a soldering tip so that they melt the plastic when installed. As the plastic cools, it solidifies around the knurls and ridges on the insert for excellent resistance to both torque and pull-out.

M3 Brass Heat-Set Insert Quantity: 9

HARDWARE CONT.

PTFE Tube

The PTFE tube is used between the Orbiter extruder and the Toolhead. Specific hot end lengths are listed below:



Phaetus Dragon Hotend

PTFE Tube Length 45mm

E3D V6 Hot end

PTFE Tube Length ??mm (Not Tested Yet)

Slice Engineering Mosquito Hot end

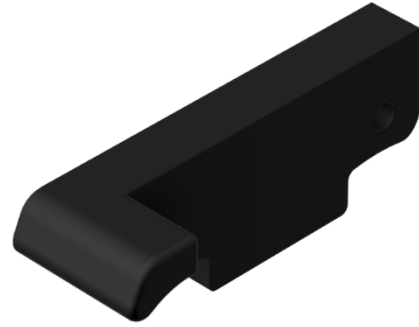
PTFE Tube Length ??mm (Not Tested Yet)

PRINTED PARTS

Clockwork Adaptor Front



Clockwork Adaptor Back



Chain Anchor



Connector Cover



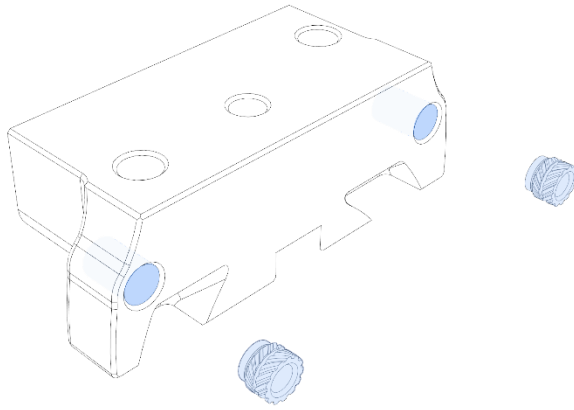
Filament Release Lever



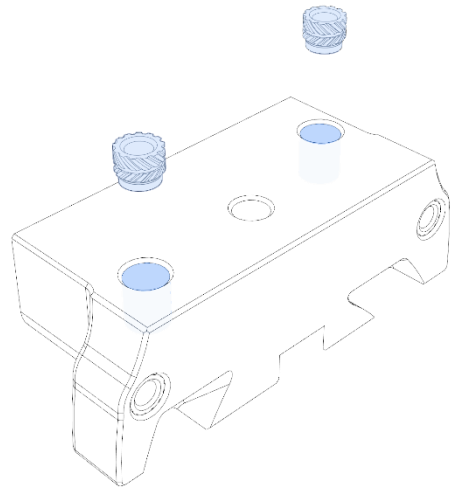
ASSEMBLY GUIDE

Assembly A. Heat-Set Inserts

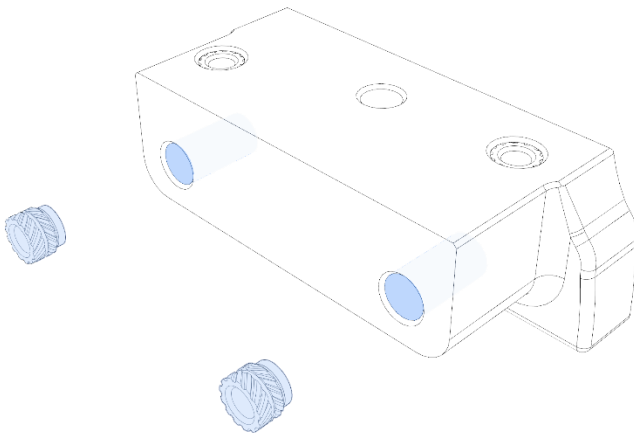
1



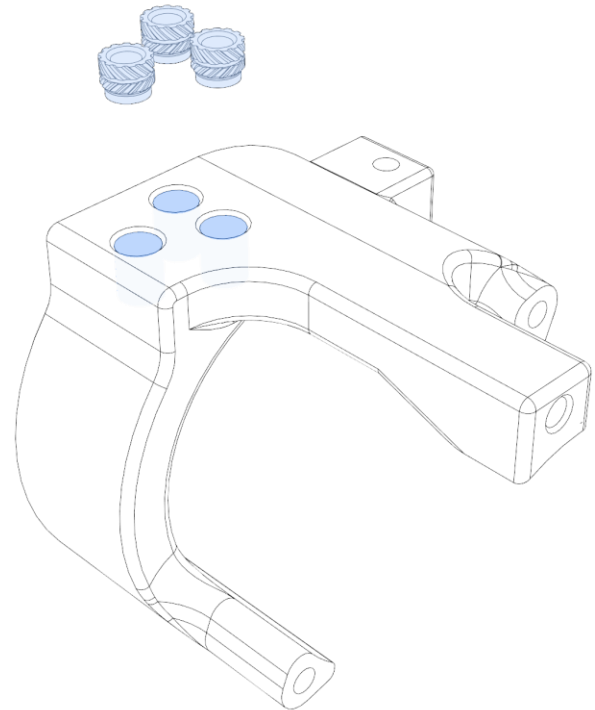
2



3

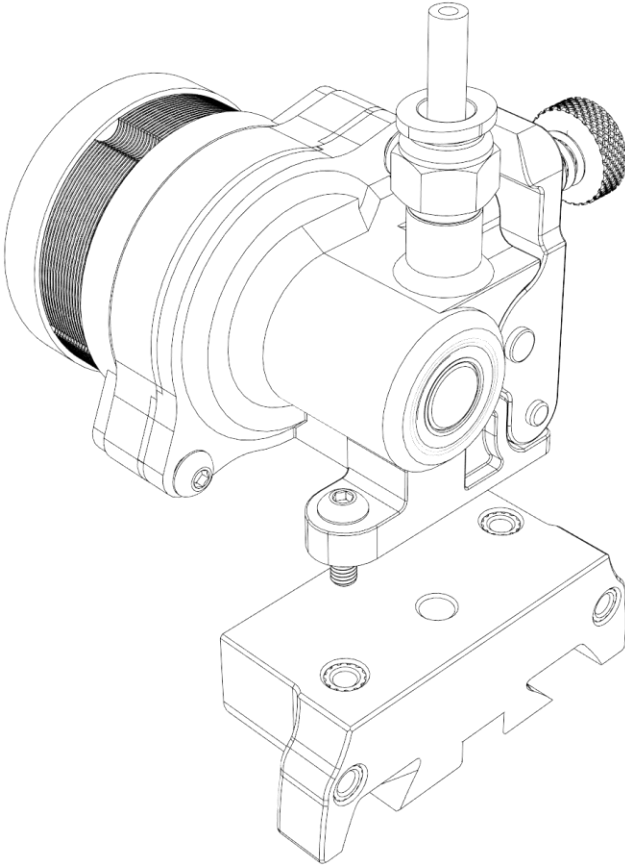


4

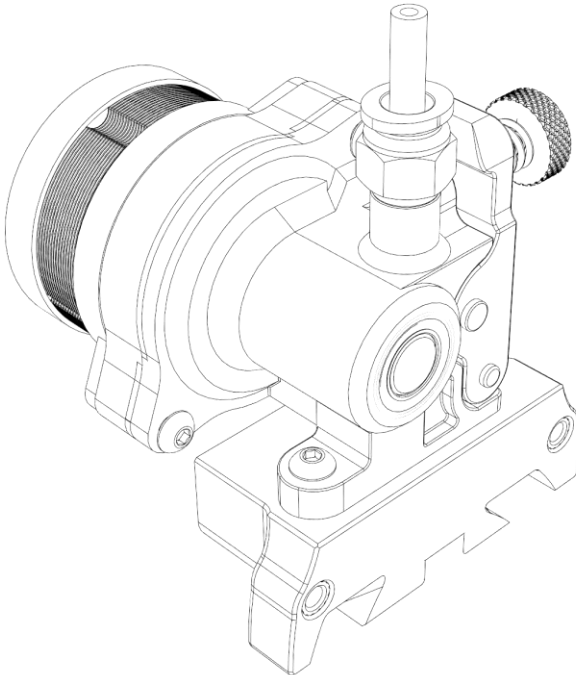


Assembly B. Orbiter Clockwork Adapter

5

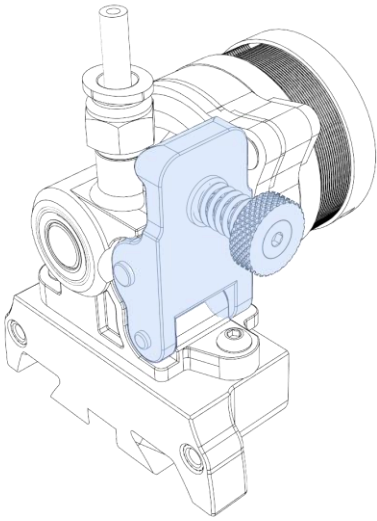


6

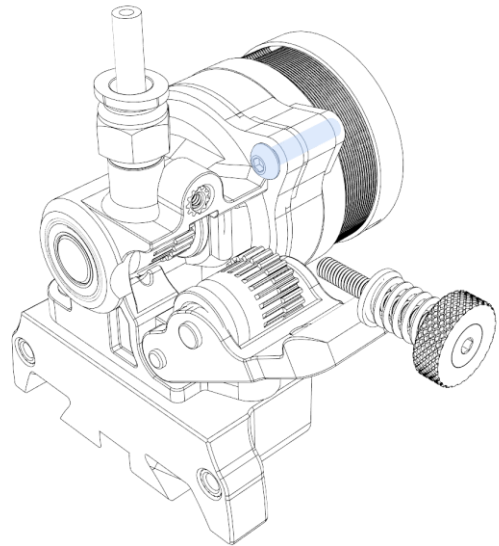


Assembly C. Connector Cover and Chain Anchor

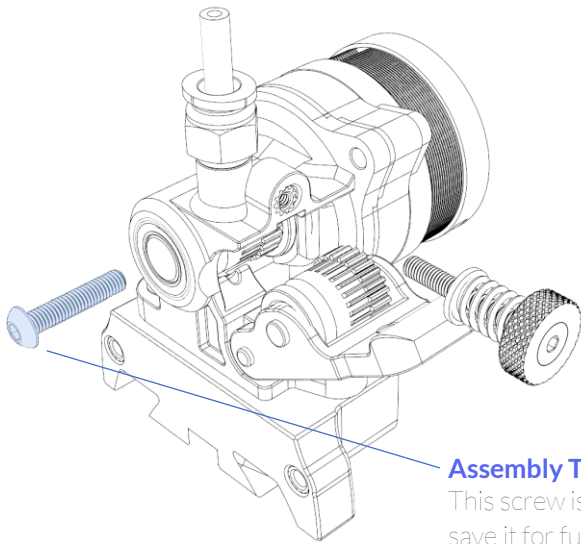
7



8

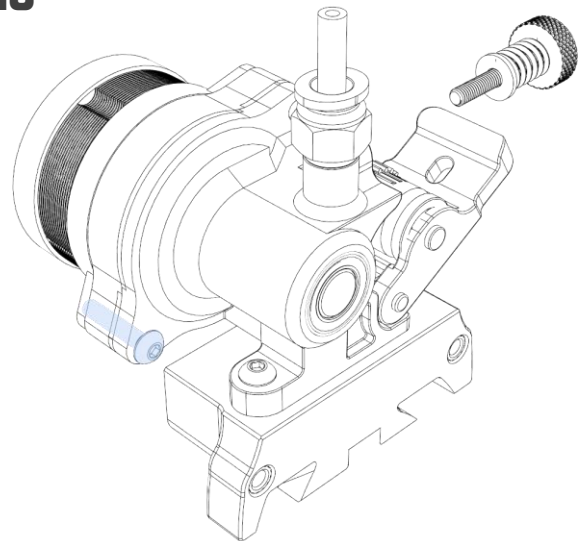


9

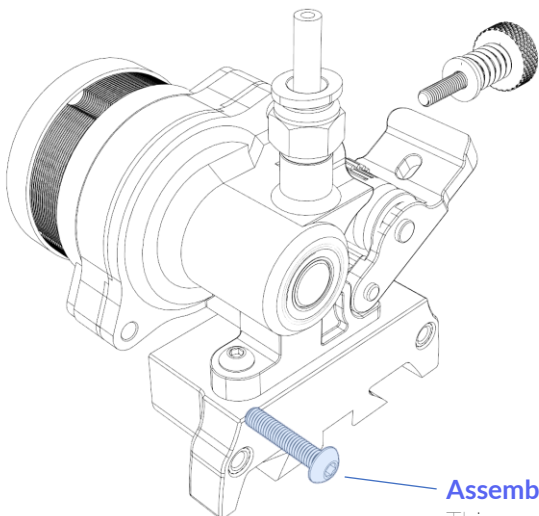


Assembly Tip
This screw isn't necessary, so save it for future projects.

10

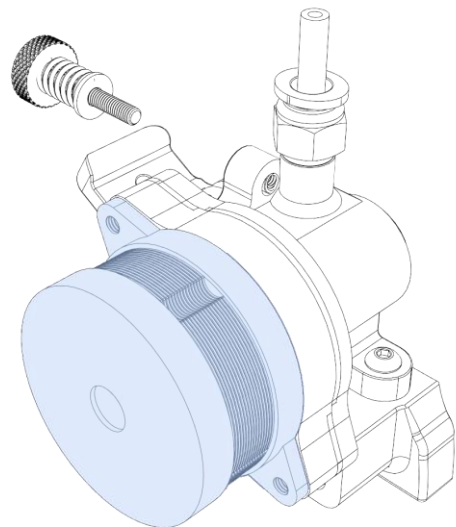


11

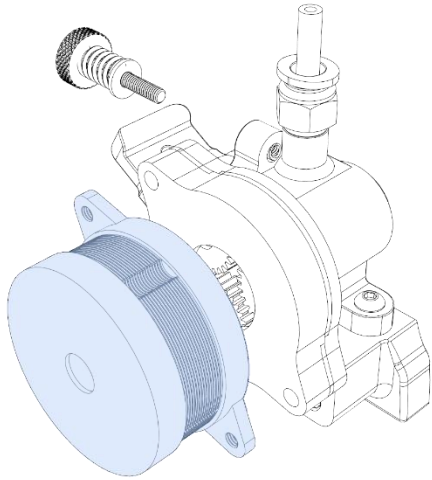


Assembly Tip
This screw isn't necessary, so save it for future projects.

12



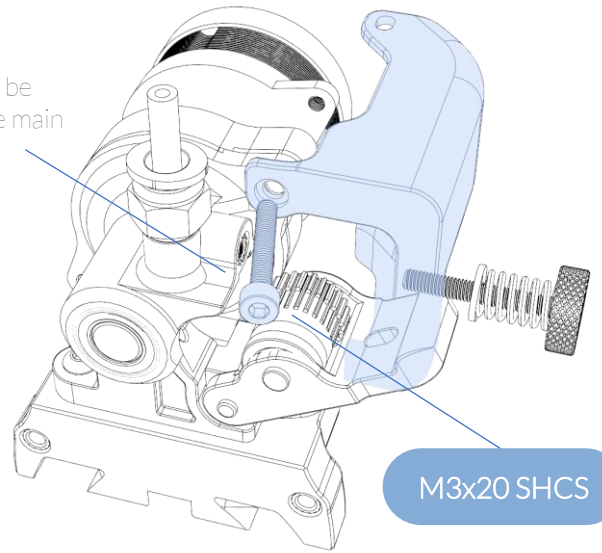
13



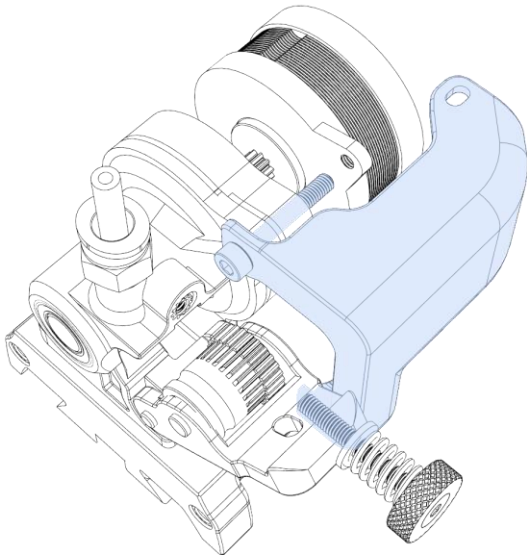
14

Assembly Tip

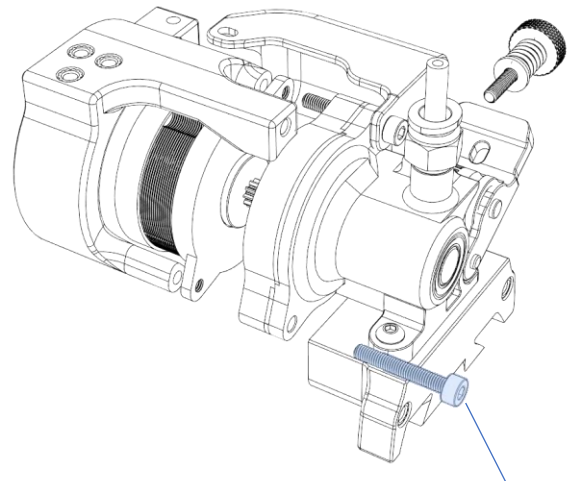
This screw needs to be angled to bypass the main body of the orbiter.



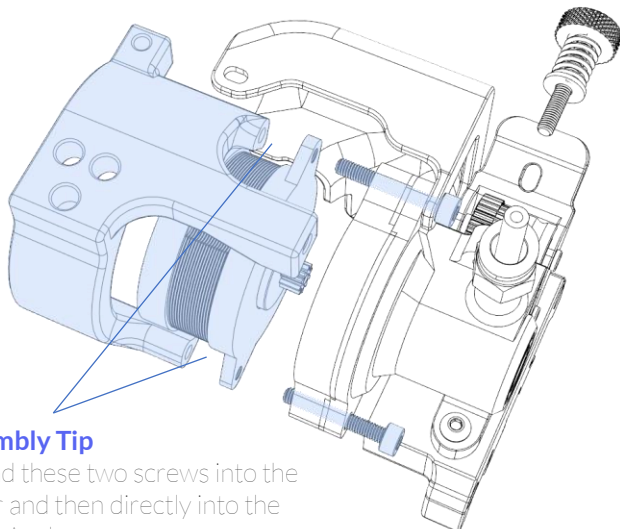
15



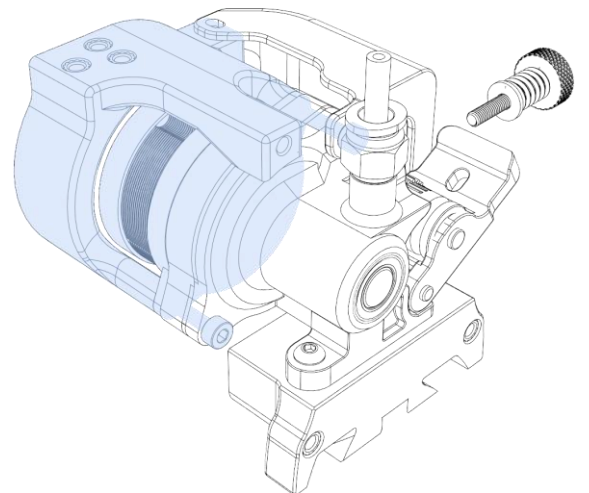
16



17

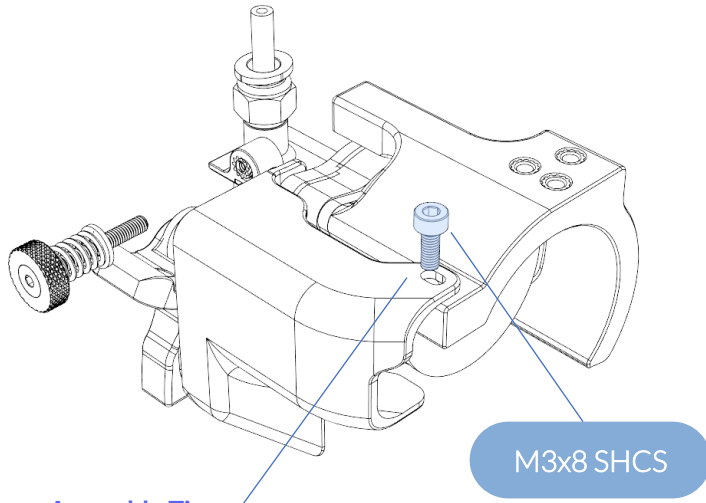


18



Assembly Tip

Thread these two screws into the motor and then directly into the Chain Anchor.

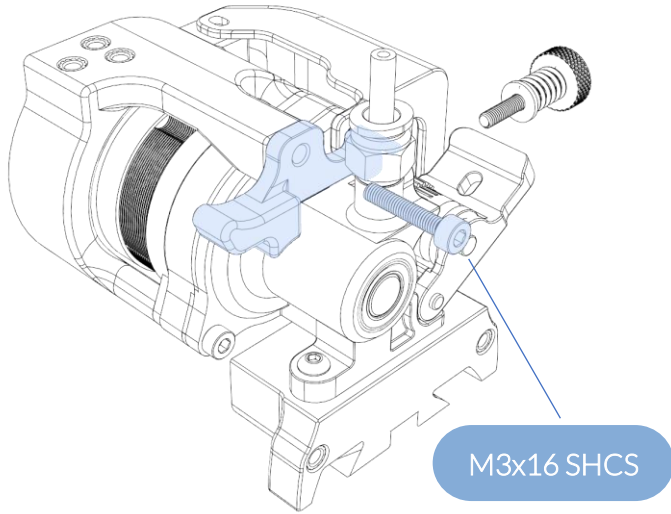


Assembly Tip

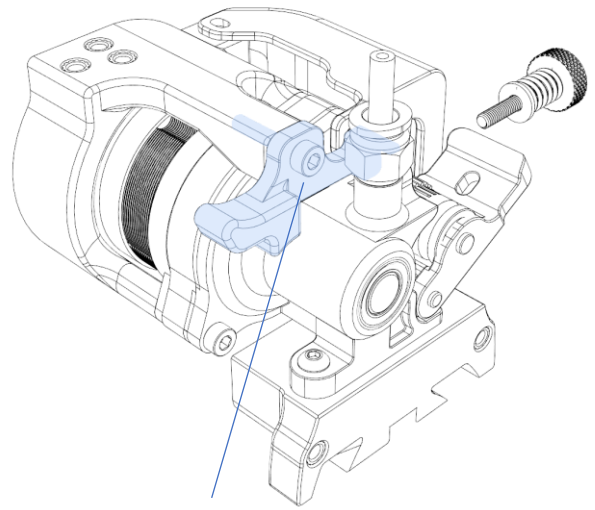
Thread this screw directly into the Chain Anchor.

Assembly D. Filament Quick Release Lever

20



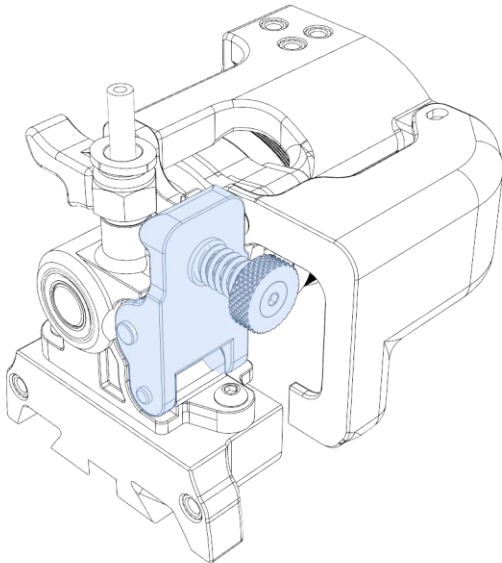
21



Assembly Tip

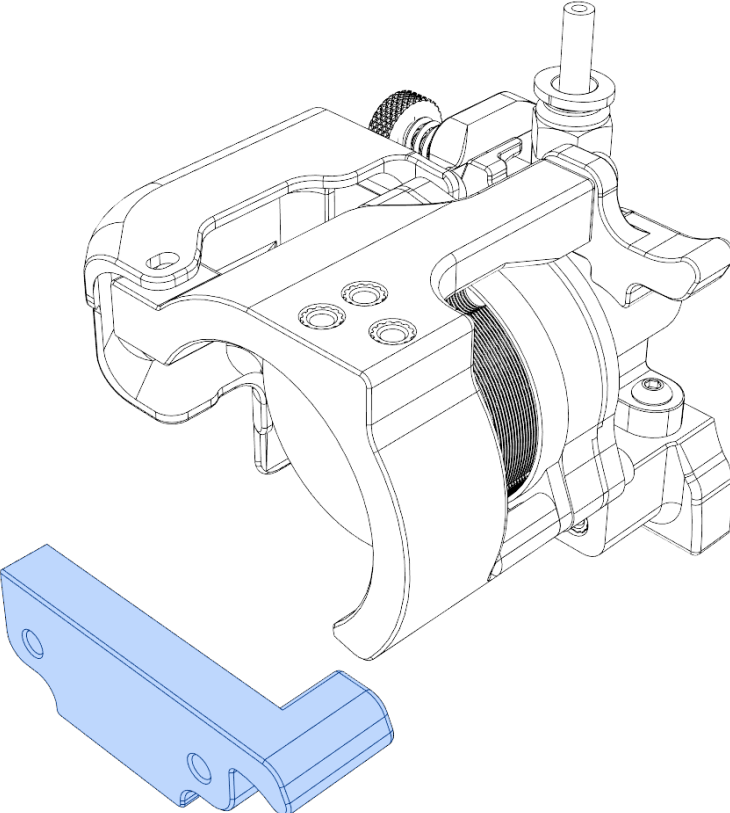
Thread this screw into the slot on the Chain Anchor until its tight then loosen by a half-turn.

22

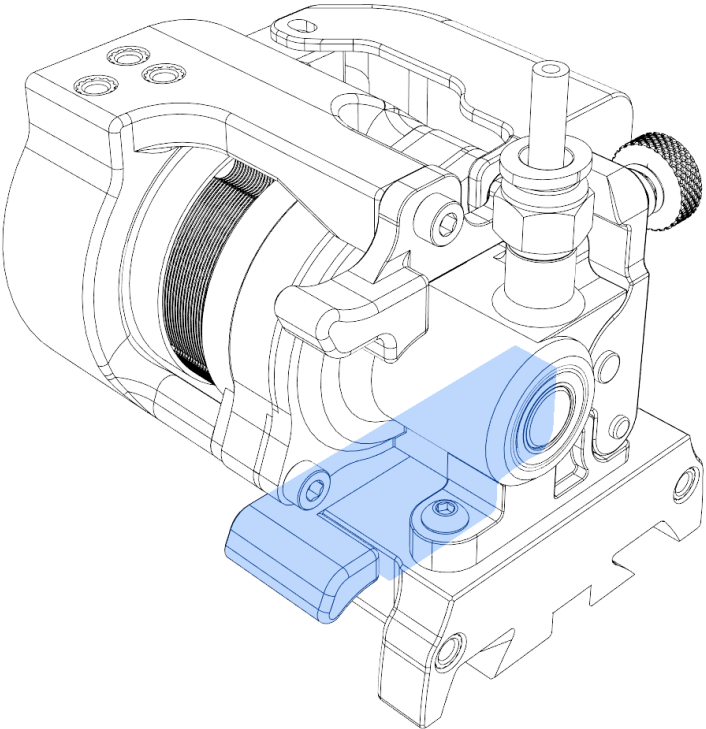


Assembly E. Final Assembly

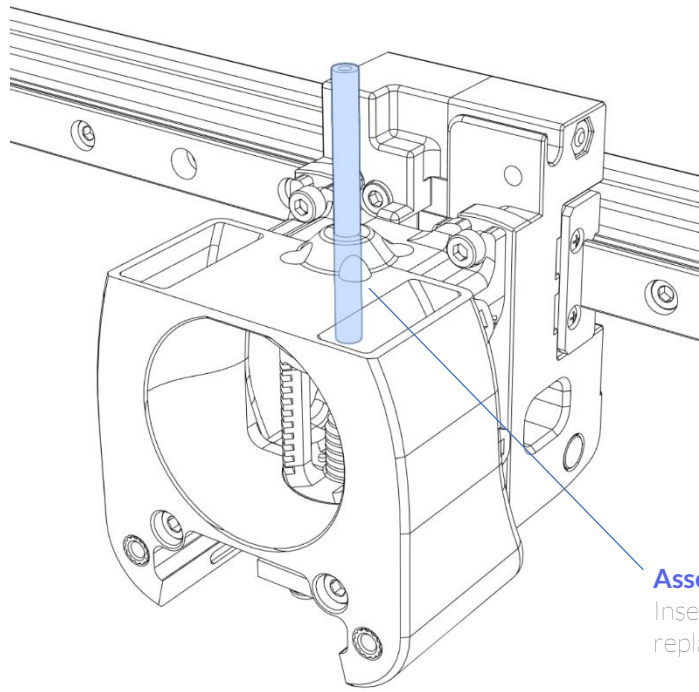
23



24



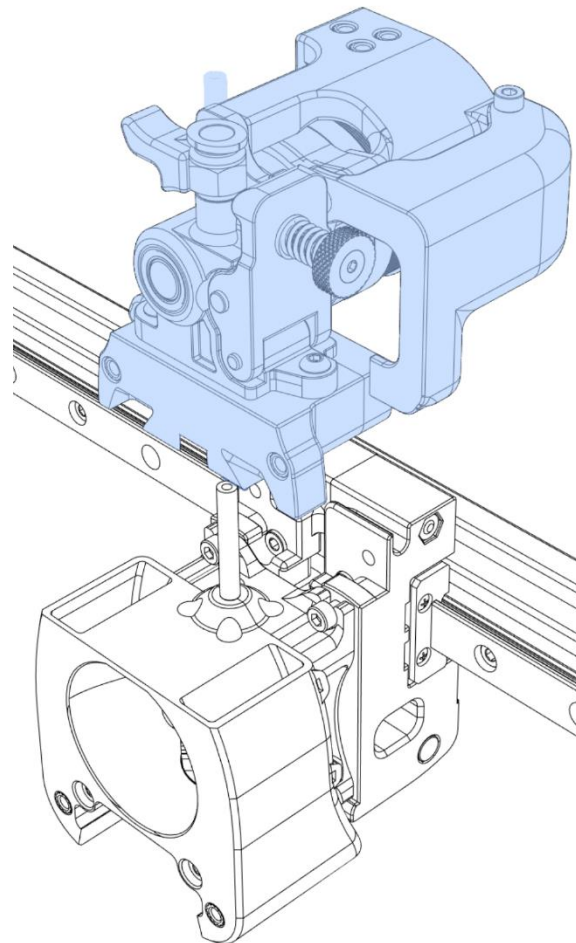
25



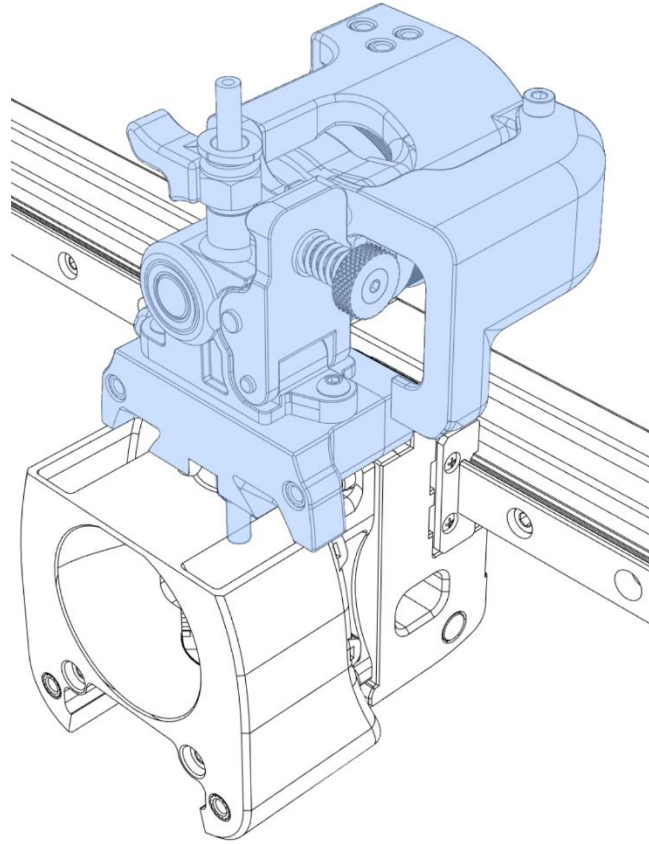
Assembly Tip

Insert the new PTFE tube and replace the original if applicable.

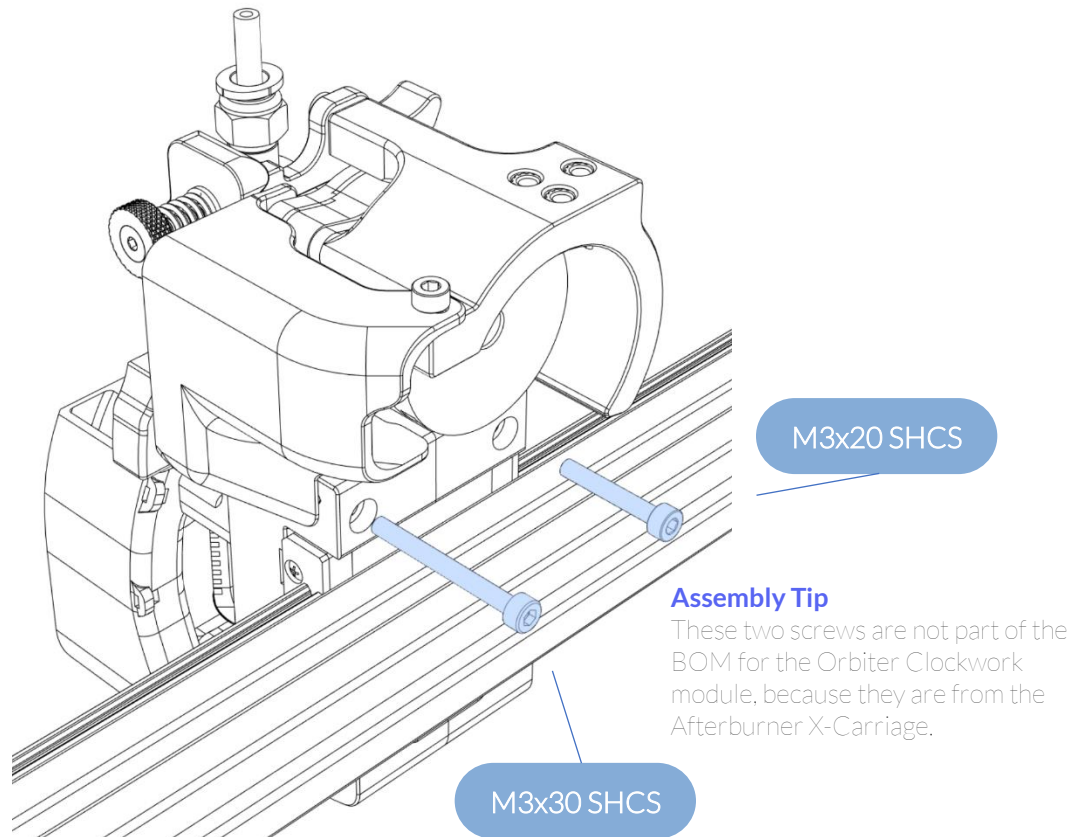
26



27



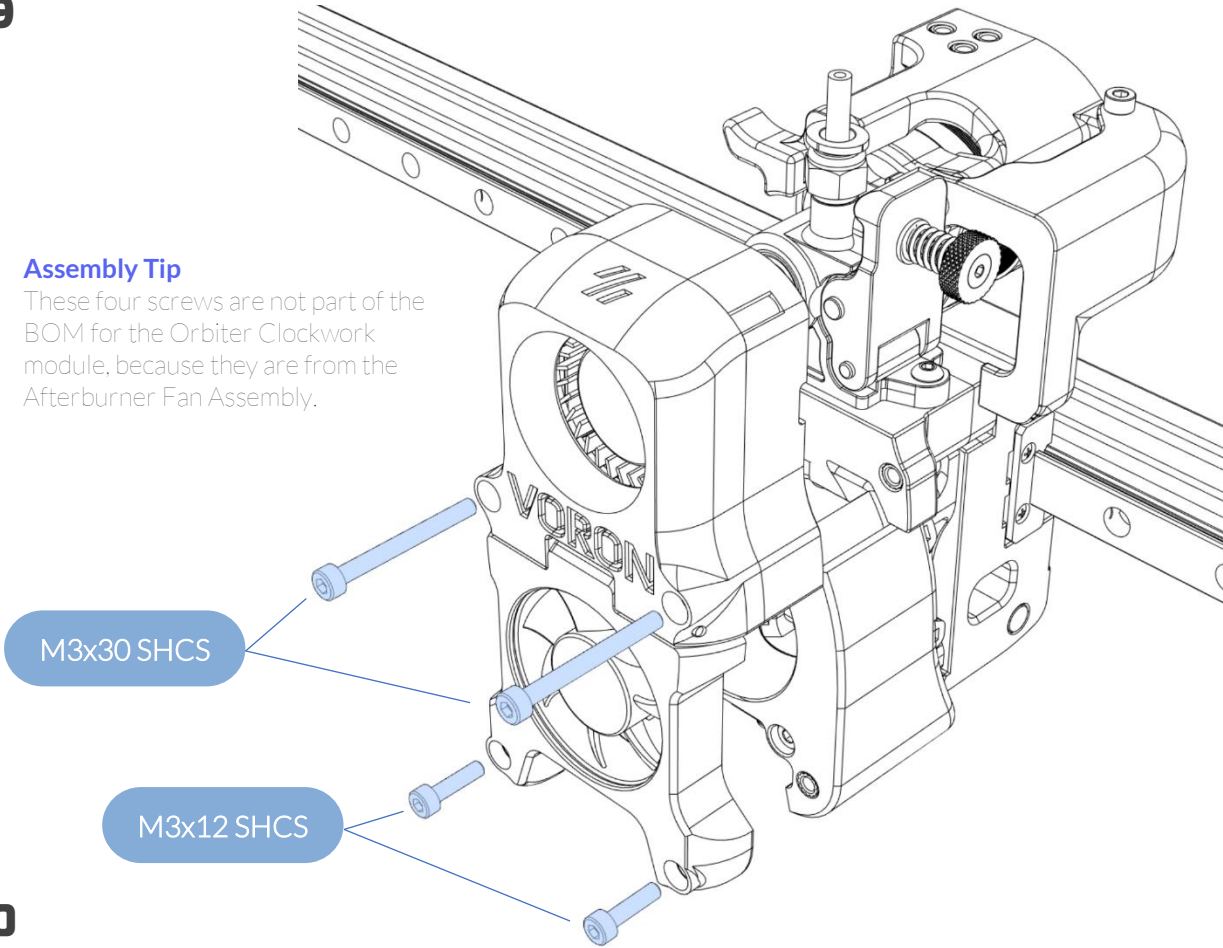
28



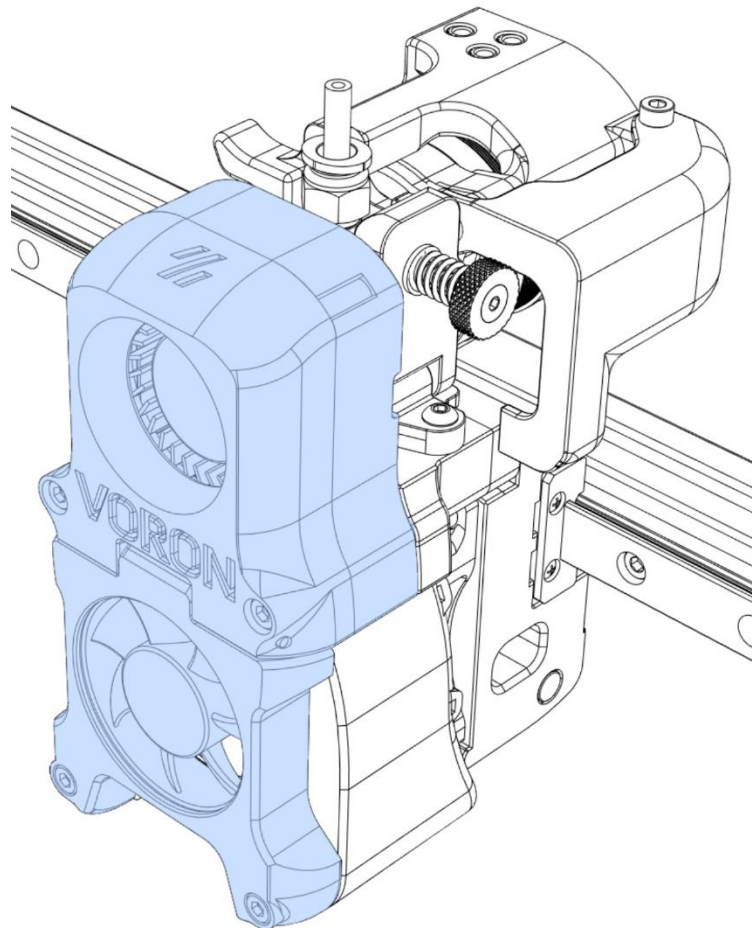
29

Assembly Tip

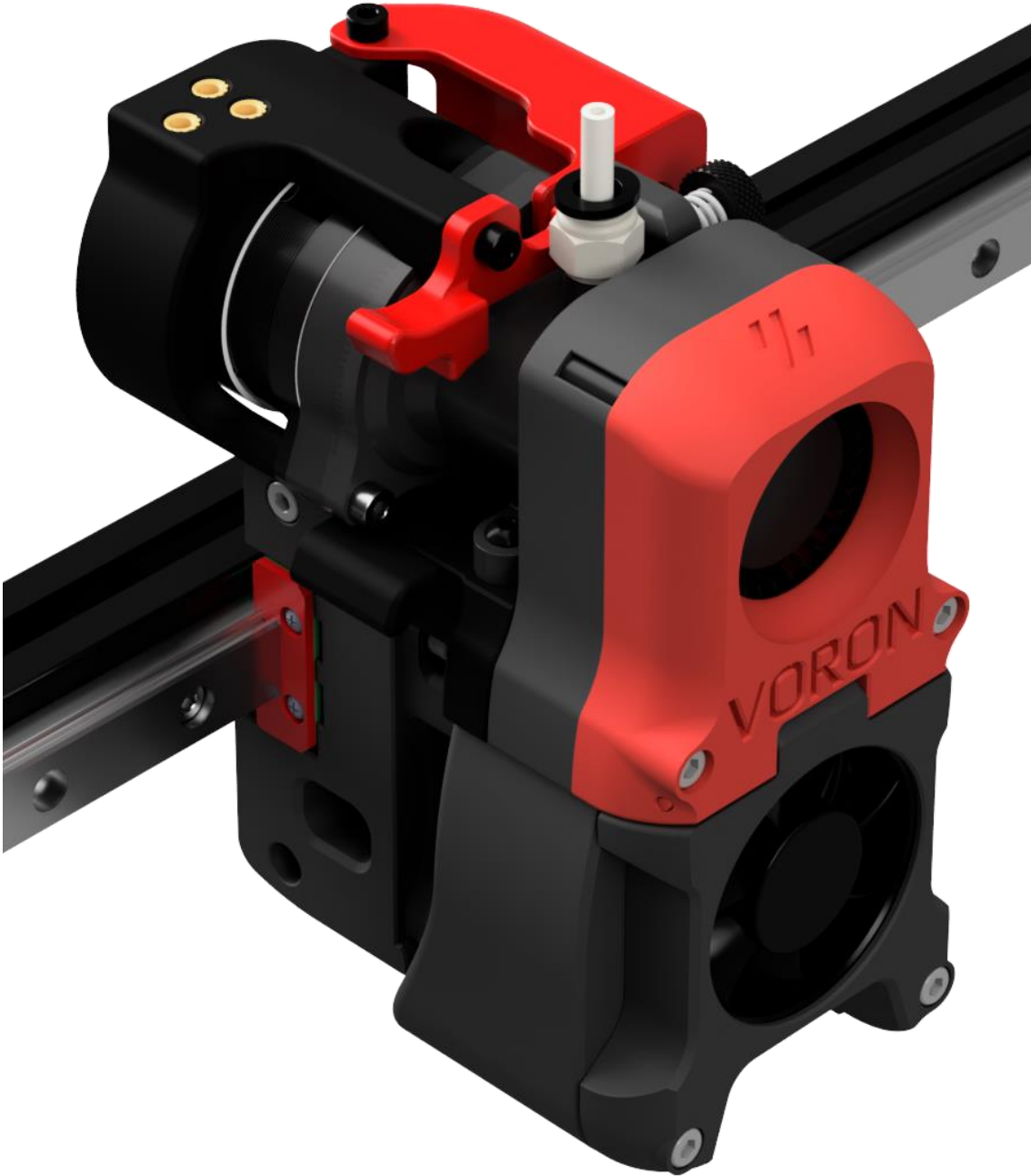
These four screws are not part of the BOM for the Orbiter Clockwork module, because they are from the Afterburner Fan Assembly.



30



Assembly Complete



Next Steps

NEXT STEP: SETUP & CALIBRATION

This manual was designed to be a simple reference manual for the assembly process. For further details on the setup of the electronics and other initial steps of your new printer please visit the VORON documentation available on github and docs.vorondesign.com.

HOW TO GET HELP

If you need assistance with your build, we're here to help. Head on over to the VORON Discord group and post your questions. This is the primary medium to help VORON Users and we have a great community that can help you out if you get stuck.

ADDITIONAL RESOURCES

GitHub

<https://github.com/VoronDesign/>
<https://github.com/spacelab2021/Orbiter-Clockwork-Module>

Get the Latest Version of this document:

https://github.com/spacelab2021/Orbiter-Clockwork-Module/blob/main/docs/Orbiter_Clockwork_Manual.pdf



<https://discord.gg/voron>